



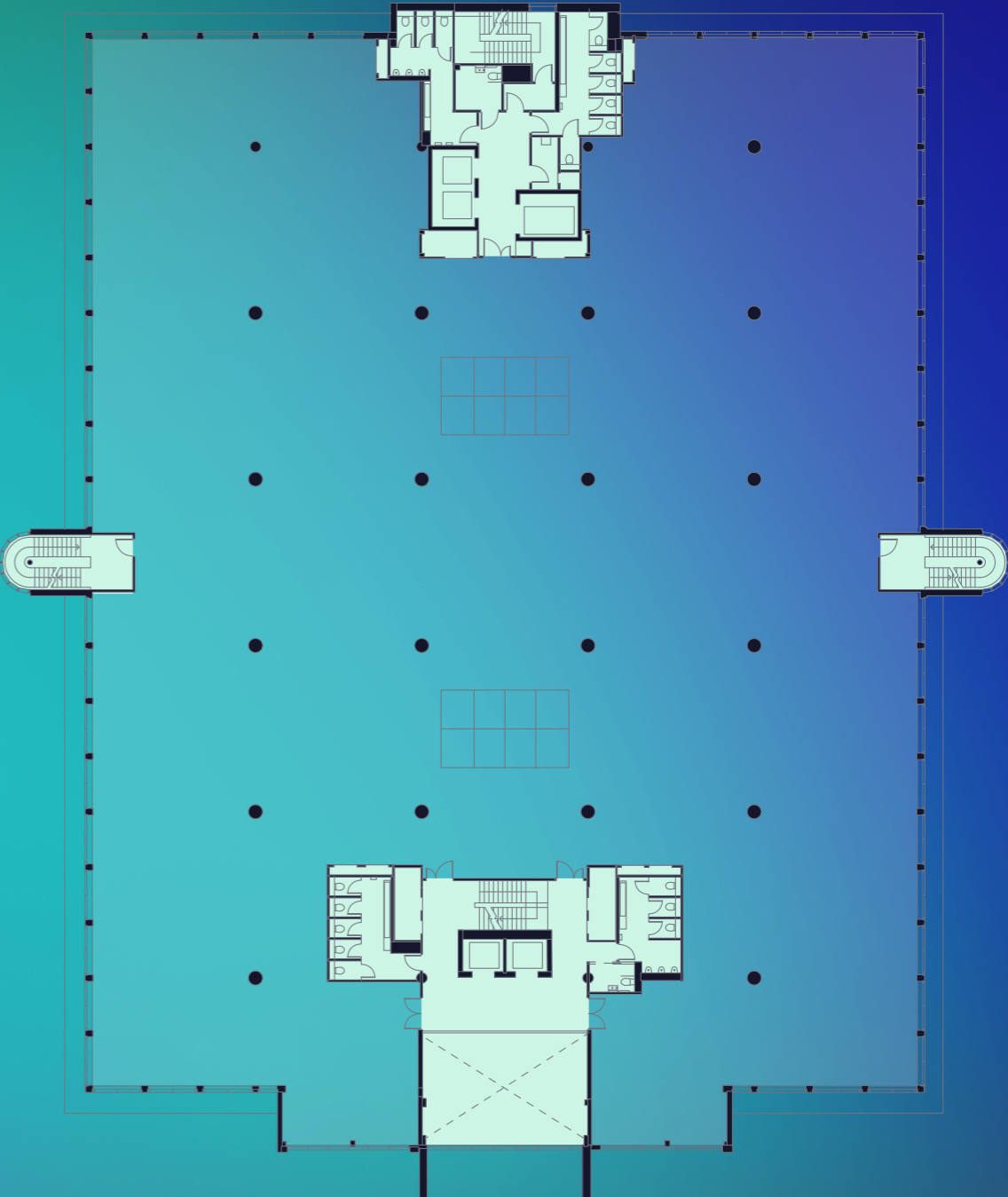
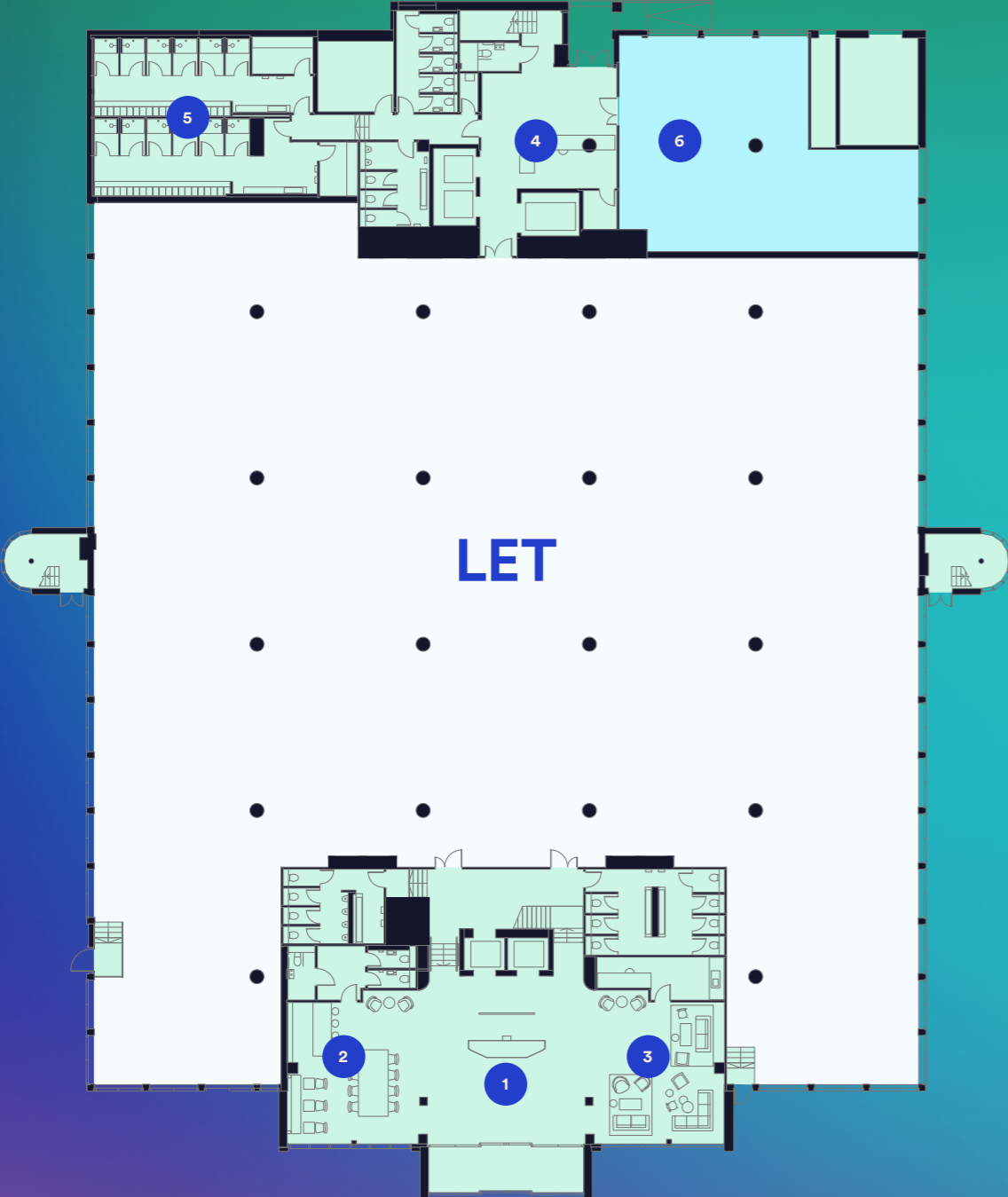
A space to innovate




10,000 - 71,000 sq ft of contemporary office space



Ground Floor

First Floor

24,051 sq ft
2,234 sq m

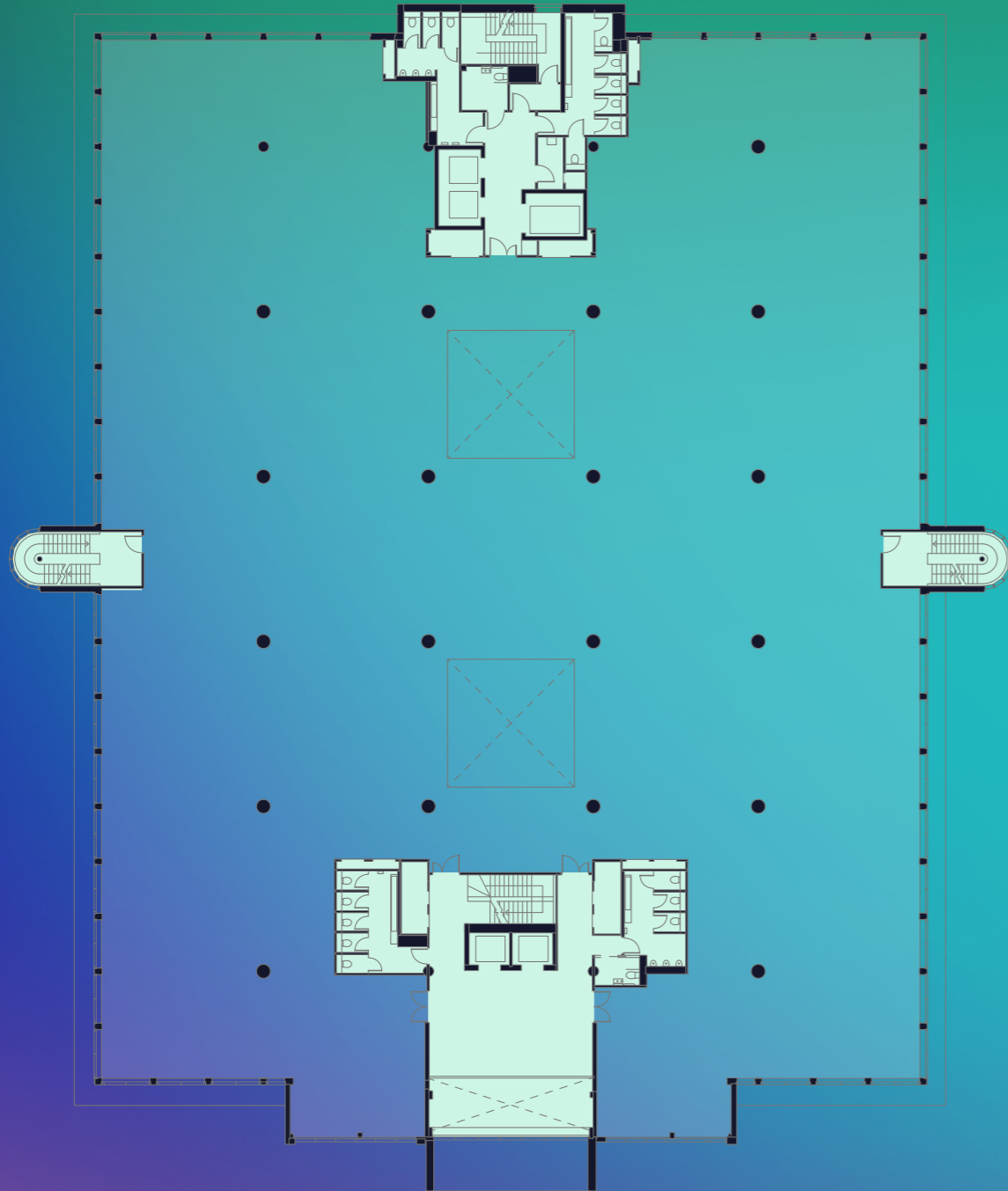


-  LET Space
-  Communal Space/Core
-  Proposed Gym Area
- 1 Main Reception
- 2 Business Lounge
- 3 Visitor Lounge
- 4 Rear Reception
- 5 Showers & Changing Rooms
- 6 Proposed Gym

-  Available Space
-  Communal Space/Core

Second Floor

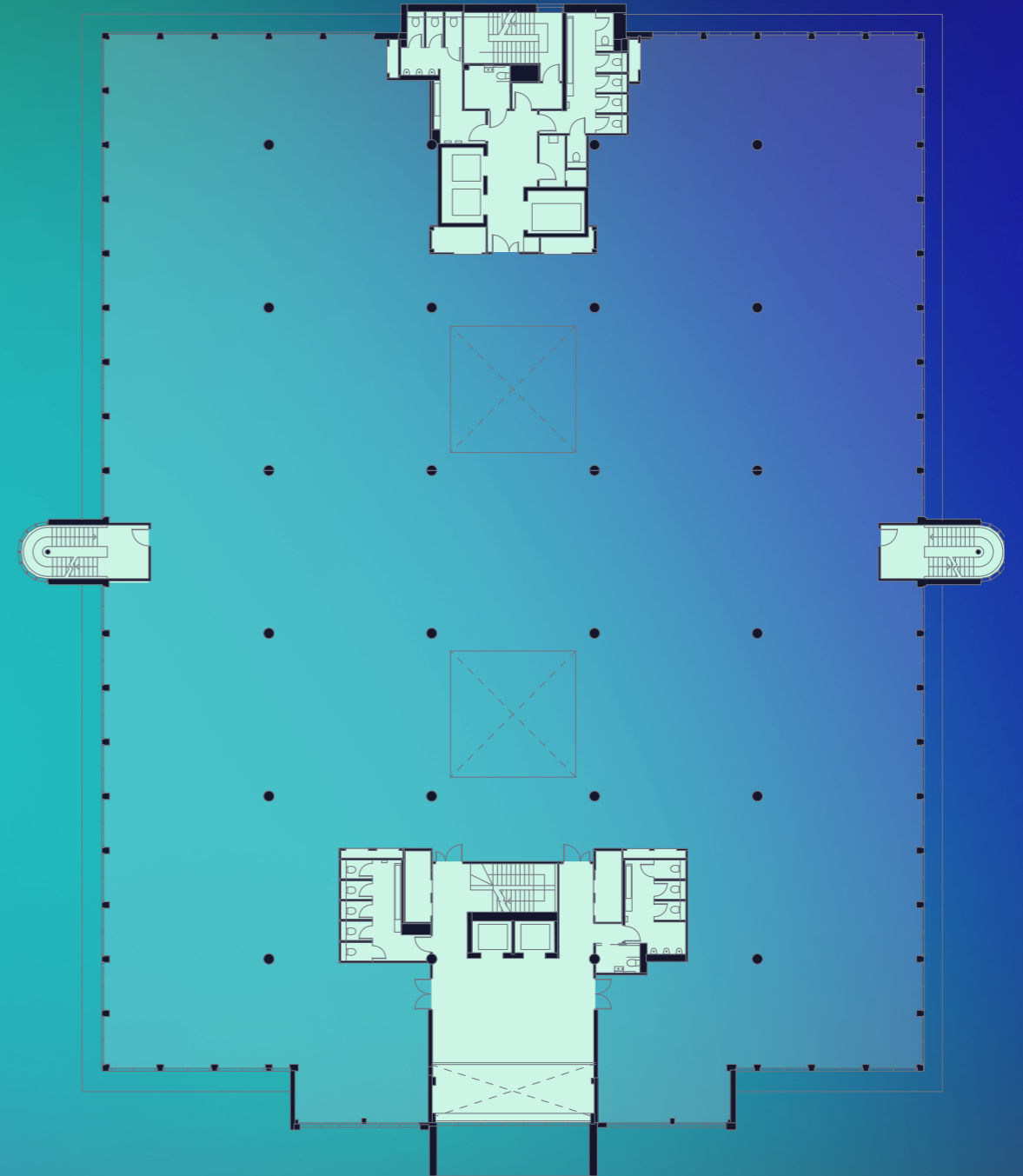
23,620 sq ft
2,194 sq m



- Available Space
- Communal Space/Core

Third Floor

23,625 sq ft
2,195 sq m



- Available Space
- Communal Space/Core

Connect with us

CBRE

Peter York
07880 737182

Matt Willcock
07920 117257

**bray
fox
smith**

Richard Harding
07730 817019

Jordan Willcock
07745 054909

Floorplans are for indicative purposes only and not to scale.
All CGIs are for indicative purposes only and are subject to change.

Misrepresentation act: IMPORTANT. These particulars do not form part of any contract. CBRE nor Bray Fox Smith nor any of their directors, employees or agents are authorised to give or make any warranty or representation on behalf of any party. Whilst information and particulars are given in good faith, intending purchasers or tenants must satisfy themselves independently as to the accuracy of all matters on which they intend to rely. All negotiations are subject to contract.
Design by Mammal | mammaldesign.com

**HYDE
PARK
HAYES**

onehydeparkhayes.com
UB3 4AZ