

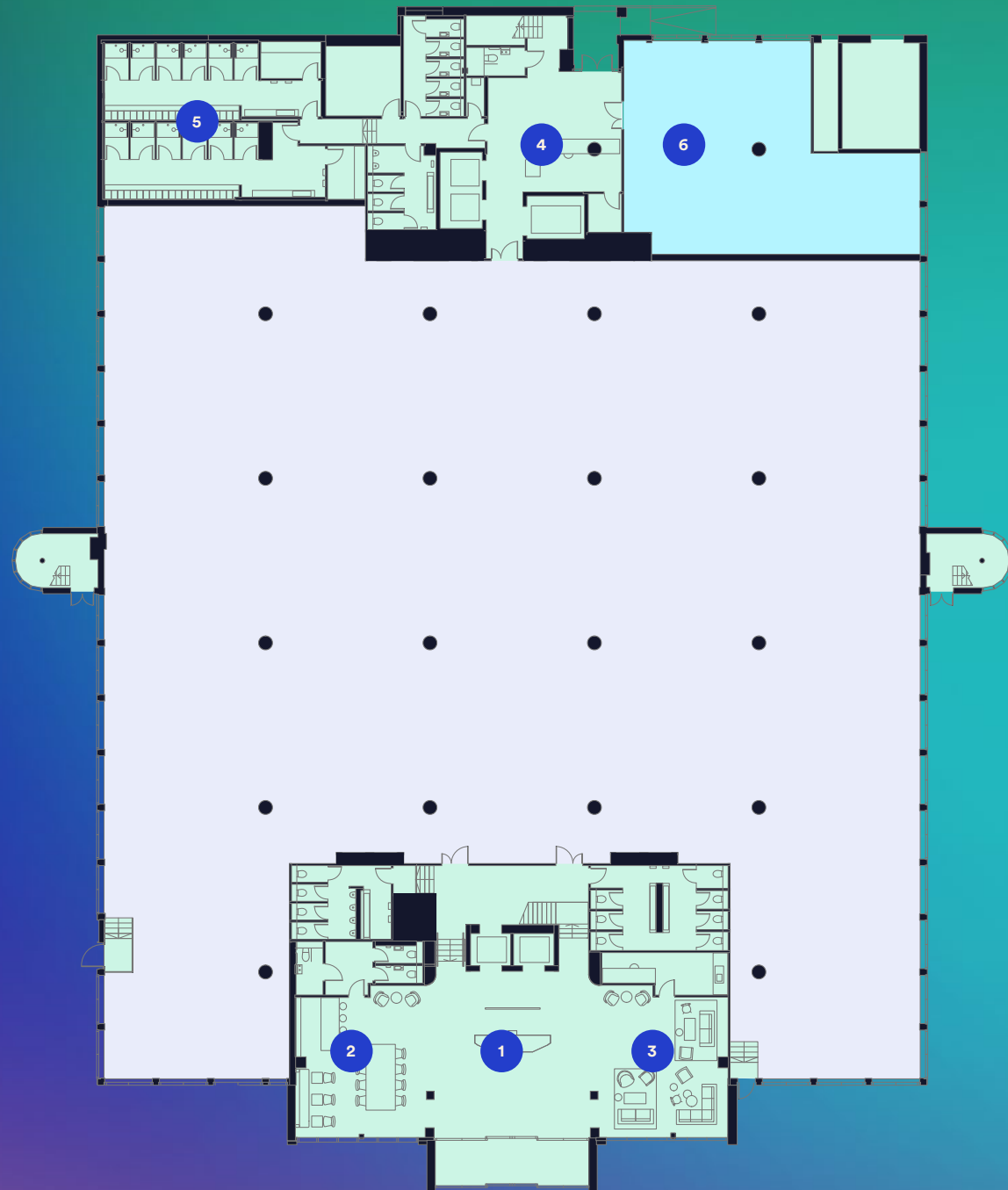


A space to innovate

10,000 - 92,000 sq ft of contemporary office space

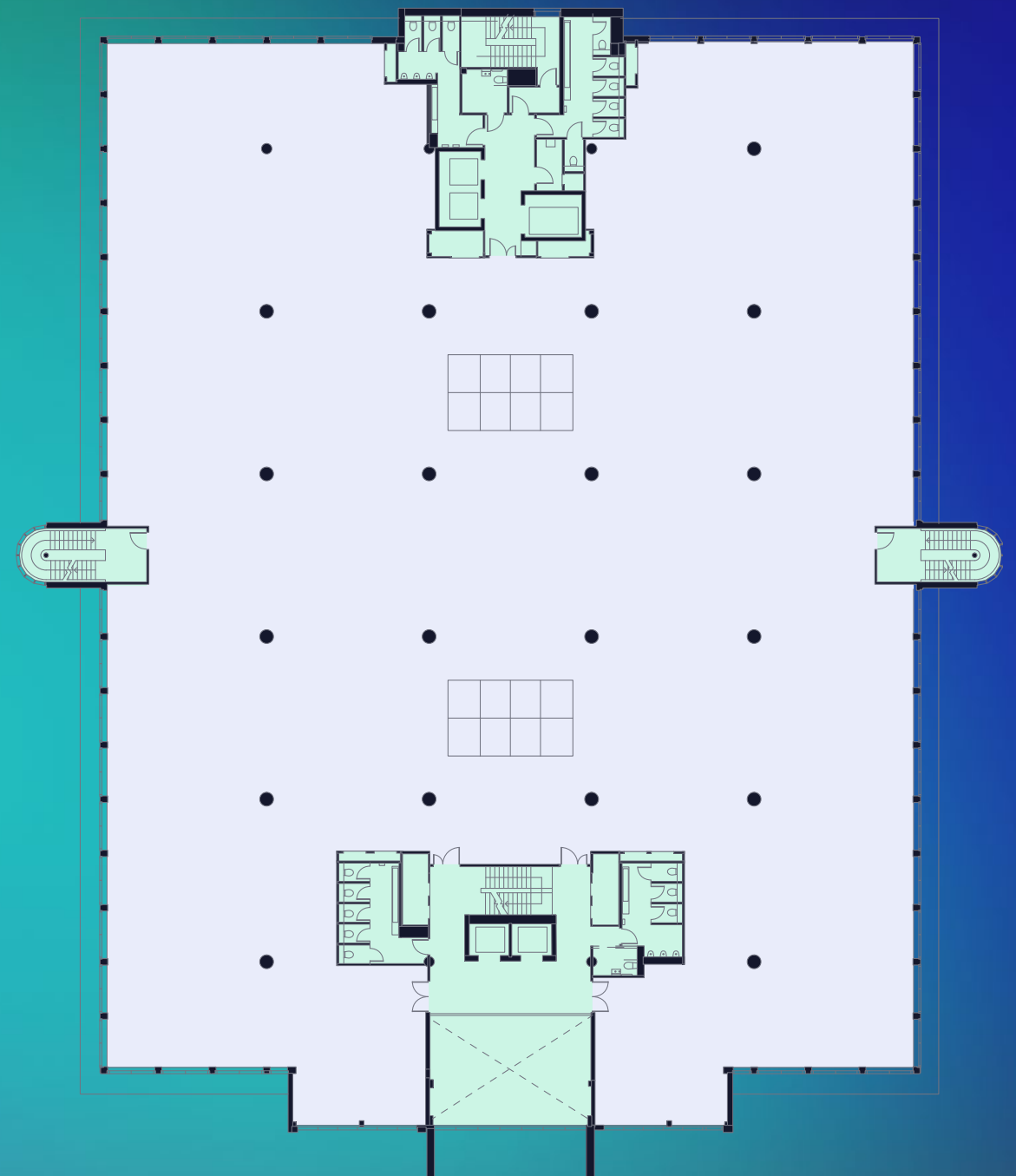
Ground Floor

20,381 sq ft
1,893 sq m



First Floor

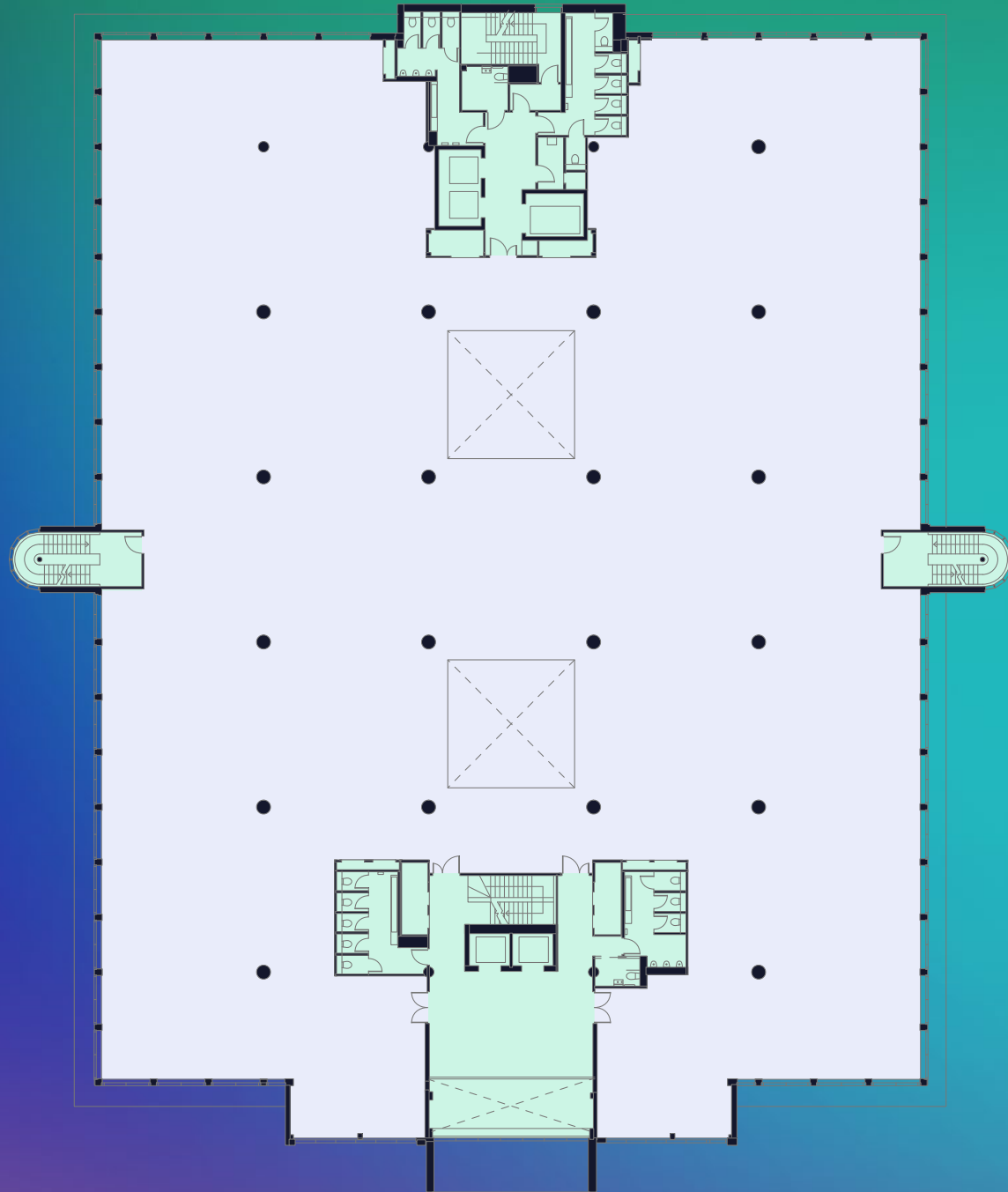
24,051 sq ft
2,234 sq m



- Available Space
- Communal Space/Core
- Proposed Gym Area
- 1 Main Reception
- 2 Business Lounge
- 3 Visitor Lounge
- 4 Rear Reception
- 5 Showers & Changing Rooms
- 6 Proposed Gym

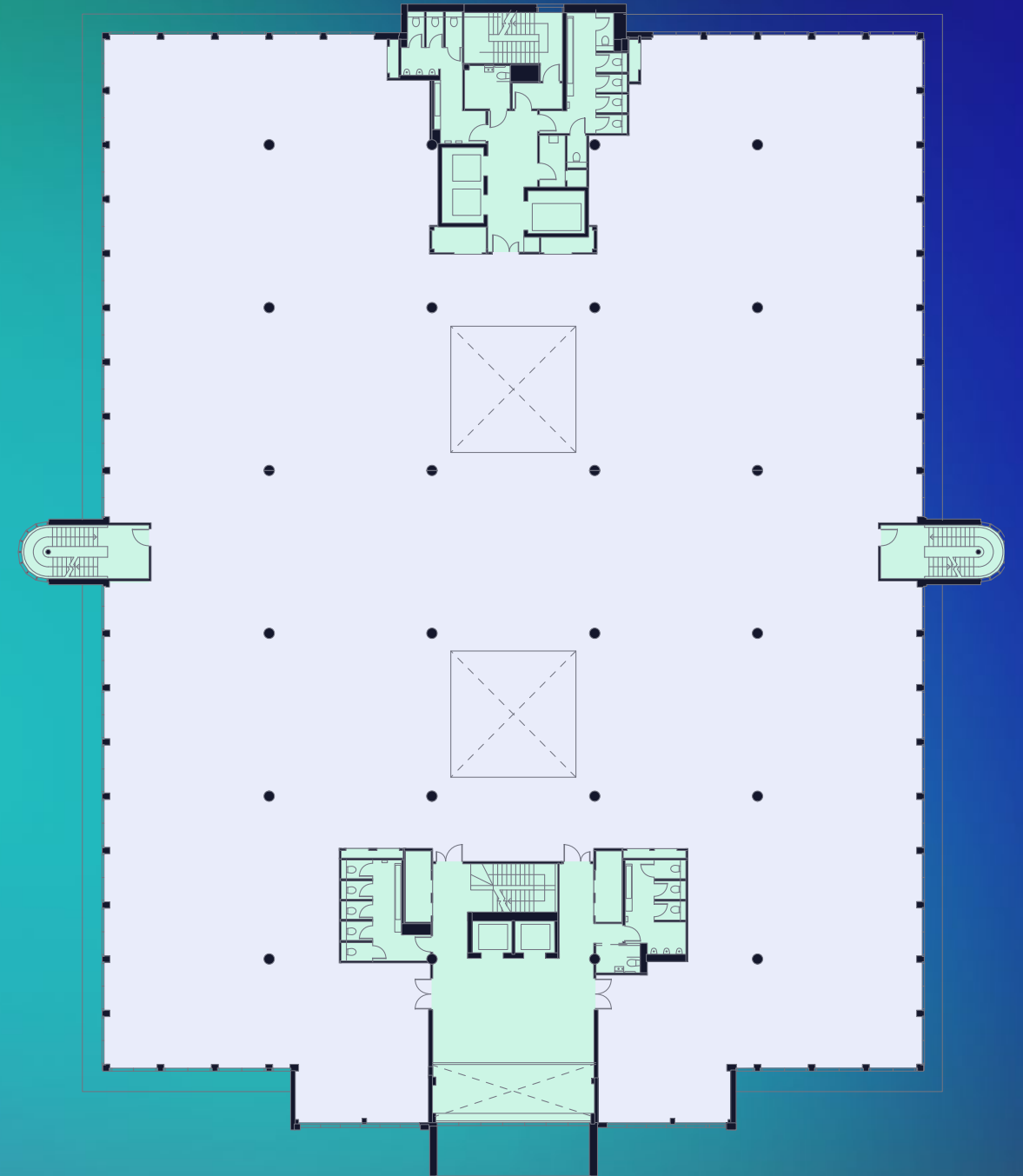
Second Floor

23,620 sq ft
2,194 sq m



Third Floor

23,625 sq ft
2,195 sq m



- Available Space
- Communal Space/Core

Connect with us

CBRE

Peter York
07880 737182

Matt Willcock
07920 117257

Farino Cole
REAL ESTATE

Damian Farino
07767 816144

Floorplans are for indicative purposes only and not to scale.
All CGIs are for indicative purposes only and are subject to change.

Misrepresentation act: IMPORTANT. These particulars do not form part of any contract. CBRE nor Farino Cole nor any of their directors, employees or agents are authorised to give or make any warranty or representation on behalf of any party. Whilst information and particulars are given in good faith, intending purchasers or tenants must satisfy themselves independently as to the accuracy of all matters on which they intend to rely. All negotiations are subject to contract.
Design by Mammal | mammaldesign.com

**HYDE
PARK
HAYES**

onehydeparkhayes.com
UB3 4AZ